

Lene Jung Kjær  
Lektor

Sektion, Animal Welfare and Disease Control

**Postadresse:**

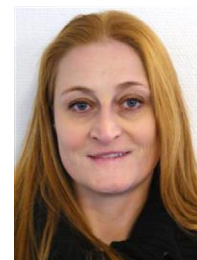
Grønnegårdsvej 8  
1870

Frederiksberg C

**E-mail:** lenju@sund.ku.dk

**Telefon:** +4535337290

**Hjemmeside:** <https://ivh.ku.dk/forskning/dyrevelfaerd-og-sygdomsbekaempelse/>



## Ansættelse

### Lektor

Sektion, Animal Welfare and Disease Control

Københavns Universitet

Frederiksberg C

1 jan. 2019 → nu

## Publikationer

### **A simulation model for highly pathogenic avian influenza spread in Danish wild birds**

Liu, Yangfan, Kjær, Lene Jung, Boklund, Anette, Clausen, P., Nygaard, T., Ward, M., Laffan, S. & Kirkeby, Carsten, 19 mar. 2024.

### **Kan man forudsige fugleinfluenza i Danmark? Kan man forudsige fugleinfluenza i Danmark?**

Kjær, Lene Jung, Boklund, Anette, Hjulsager, C. K., Larsen, Lars & Kirkeby, Carsten, 22 feb. 2024, I: *videnskab.dk*.

### **Risk factors for avian influenza in Danish poultry and wild birds during the epidemic from June 2020 to May 2021**

Liu, Yangfan, Kjær, Lene Jung, Boklund, Anette, Hjulsager, C. K., Larsen, Lars & Kirkeby, Carsten, feb. 2024, I: *Frontiers in Veterinary Science*. 11

### **Detection of African Swine Fever Virus and Blood Meals of Porcine Origin in Hematophagous Insects Collected Adjacent to a High-Biosecurity Pig Farm in Lithuania; A Smoking Gun?**

Olesen, A. S., Stelder, J. J., Tjørnehøj, K., Johnston, C. M., Lohse, L., Kjær, Lene Jung, Boklund, Anette, Bøtner, A., Belsham, Graham John, Bødker, René & Rasmussen, T. B., 2023, I: *Viruses*. 15, 6, 1255.

### **Fugleinfluenza – kommet for at blive? Udbrud af fugleinfluenza koster samfundet mange penge hvert år, når tusindvis af fjerkræ bliver aflivet. DK-VET har flere værktøjer i støbeskeen, så myndighederne kan bekæmpe spredning af fugleinfluenza optimalt.**

Kirkeby, Carsten, Kjær, Lene Jung & Boklund, Anette, 2023, I: *Dansk Veterinaertidsskrift*. 106, 1, s. 43

### **Modelling transmission of Avian Influenza in wild birds using a spatiotemporal cellular automata model**

Liu, Yangfan, Kjær, Lene Jung, Boklund, Anette, Clausen, P., Nygaard, T., Ward, M. P., Laffan, S. & Kirkeby, Carsten, 2023, *Abstract book of the GeoVet 2023 International Conference: Expanding boundaries: Interdisciplinary geospatial research for the One Health Era*. Conte, A., Ippoliti, C. & Savini, L. (red.). Edizioni IZSTe-press, s. 97-98

### **Potential drivers of human tick-borne encephalitis in the Örebro region of Sweden, 2010-2021**

Kjær, Lene Jung, Johansson, M., Lindgren, P., Asghar, N., Wilhelmsson, P., Fredlund, H., Christensson, M., Wallenhammar, A., Bødker, René, Rasmussen, G. & Kjellander, P., 2023, I: *Scientific Reports*. 13, 7685.

### **Potential drivers of tick-borne encephalitis in humans in the Region Örebro of Sweden, 2010-2021**

Kjær, Lene Jung, Johansson, M., Lindgren, P. E., Asghar, N., Wilhelmsson, P., Fredlund, H., Christensson, M., Wallenhammar, A., Bødker, René, Rasmussen, G. & Kjellander, P., 2023.

**Potential for Introduction of African Swine Fever Virus into High-Biosecurity Pig Farms by Flying Hematophagous Insects**  
Stelder, J. J., Olesen, A. S., Belsham, Graham John, Rasmussen, T. B., Botner, A., Kjær, Lene Jung, Boklund, Anette & Bødker, René, 2023, I: *Transboundary and Emerging Diseases*. 2023, 15 s., 8787621.

**Potential mosquito vector attraction to- and feeding preferences for pigs in Romanian backyard farms**  
Stelder, J. J., Mihalca, A. D., Olesen, A. S., Kjær, Lene Jung, Boklund, Anette, Rasmussen, T. B., Marinov, M., Alexe, V., Balmoş, O. M. & Bødker, René, 2023, I: *Frontiers in Veterinary Science*. 9, 1046263.

**Predicting *Culex pipiens/restuans* population dynamics using a weather driven dynamic compartmental population model**  
Bakran-Lebl, K., Kjær, Lene Jung & Conrady, Beate, 2023, I: *Insects*. 14, 3, 293.

**Prevalence of tick-borne encephalitis virus in questing *Ixodes ricinus* nymphs in southern Scandinavia and the possible influence of meteorological factors**  
Lamsal, A., Edgar, K. S., Jenkins, A., Renssen, H., Kjær, L. J., Alfsnes, K., Bastakoti, S., Dieseth, M., Klitgaard, K., Lindstedt, H. E. H., Paulsen, K. M., Vikse, R., Korslund, L., Kjelland, V., Stuen, S., Kjellander, P., Christensson, M., Teräväinen, M., Jensen, L. M., Regmi, M. & 5 flere, Giri, D., Marsteen, L., Bødker, René, Soleng, A. & Andreassen, Å. K., 2023, I: *Zoonoses and Public Health*. 70, 6, s. 473-484

**Surveillance data and early warning models of highly pathogenic avian influenza in East Asia, 2020-2022**  
Kjær, Lene Jung, Kirkeby, Carsten, Boklund, Anette & Ward, M. P., 2023, *Abstract book of the GeoVet 2023 International Conference: Expanding boundaries: Interdisciplinary geospatial research for the One Health Era*. Conte, A., Ippoliti, C. & Savini, L. (red.). Edizioni IZSTe-press, s. 102-103

**Using surveillance data for early warning modelling of highly pathogenic avian influenza in Europe reveals a seasonal shift in transmission, 2016-2022**  
Kjær, Lene Jung, Ward, M. P., Boklund, Anette, Larsen, Lars, Hjulsager, C. K. & Kirkeby, Carsten, 2023, I: *Scientific Reports*. 13, 16 s., 15396.

**Risk factors of avian influenza in Danish poultry and wild birds during the epidemic waves from June 2020 to May 2021**  
Liu, Yangfan, Kjær, Lene Jung, Boklund, Anette, Hjulsager, C. K., Larsen, Lars & Kirkeby, Carsten, 8 aug. 2022.

**Using national avian influenza data to predict spatial patterns in wild birds from Denmark, 2006-2020**  
Kjær, Lene Jung, Boklund, Anette, Larsen, Lars, Hjulsager, C. K. & Ward, M. P., 3 maj 2022.

**Forecasting outbreaks of high pathogenic avian influenza in Europe**  
Kjær, Lene Jung, Boklund, Anette, Larsen, Lars, Hjulsager, C. K., Ward, M. P. & Kirkeby, Carsten, 23 mar. 2022.

**Landscape effects and spatial patterns of avian influenza virus in Danish wild birds, 2006-2020**  
Kjær, Lene Jung, Hjulsager, C. K., Larsen, Lars, Boklund, Anette, Halasa, T., Ward, M. P. & Kirkeby, Carsten, 2022, I: *Transboundary and Emerging Diseases*. 69, 2, s. 706-719

**Pandemisk risiko: Baggrund, relevans og perspektiv**  
Conrady, Beate & Kjær, Lene Jung (Oversætter), 2022, *Risikovurdering af zoonotiske virus og andre agens, der kan forekomme i dyr og kan have epidemisk potentiale*. Bødker, R., Kjær, L. J., Jokelainen, P., Trebbien, R., Boklund, A. & Larsen, L. E. (red.). Københavns Universitet, 14 s.

**The effect of landscape, transmission mode and social behavior on disease transmission: Simulating the transmission of chronic wasting disease in white-tailed deer (*Odocoileus virginianus*) populations using a spatially explicit agent-based model**  
Kjær, Lene Jung & Schaubert, E. M., 2022, I: *Ecological Modelling*. 472, 110114.

**Vectorborne zoonoses**  
Bødker, René, Reipurth, M., Hammer, Anne Sofie Vedsted, Lohse, L. & Kjær, Lene Jung, 2022, *Annual Report on Zoonoses in Denmark 2021*. Olsen, A., Høg, B. B., Sandberg, M., Müller, L. & Torpdahl, M. (red.). Technical University of Denmark, s. 17-20 (Annual Report on Zoonoses in Denmark, Bind 2021).

### **Spatial patterns of avian influenza in wild birds from Denmark, 2006-2020**

Kjær, Lene Jung, Boklund, Anette, Kirkeby, Carsten, Hjulsager, C. K., Larsen, Lars, Halasa, T. & Ward, M. P., 25 mar. 2021.

### **Spatial patterns of avian influenza in wild birds from Denmark, 2006-2020**

Kjær, Lene Jung, Hjulsager, C., Larsen, Lars, Boklund, Anette, Halasa, T., Ward, M. P. & Kirkeby, Carsten, 11 mar. 2021, *Society for Veterinary Epidemiology and Preventive Medicine: Proceedings: Online, 24-26 March 2021*. Society for Veterinary Epidemiology and Preventive Medicine

### **Livestock-associated MRSA survival on house flies (*Musca domestica*) and stable flies (*Stomoxys calcitrans*) after removal from a Danish pig farm**

Stelder, J. J., Kjær, Lene Jung, Jensen, L. B., Boklund, Anette, Denwood, Matt, Carlsen, M. & Bødker, René, 2021, I: *Scientific Reports*. 11, 3527.

### **Scandinavia and ticks in a changing climate**

Kjær, Lene Jung & Bødker, René, 2021, *Climate, ticks and disease*. CABI Publishing, s. 90-95 6 s.

### **The raccoon dog (*Nyctereutes procyonoides*) as a reservoir of zoonotic diseases in Denmark**

Kjær, Lene Jung, Jensen, L. M., Chriél, M., Bødker, René & Petersen, H. H., 2021, I: *International Journal for Parasitology: Parasites and Wildlife*. 16, s. 175-182

### **Vectorborne zoonoses**

Bødker, René, Thorhauge-Thejll, E., Kjær, Lene Jung, Stelder, J. J. & Boklund, Anette, 2021, *Annual Report on Zoonoses in Denmark 2020*. Technical University of Denmark, s. 23-24 (Annual Report on Zoonoses in Denmark).

### **Spatial patterns of pathogen prevalence in questing *Ixodes ricinus* nymphs in southern Scandinavia, 2016**

Kjær, Lene Jung, Klitgaard, K., Soleng, A., Edgar, K. S., Lindstedt, H. E. H., Paulsen, K. M., Andreassen, Å. K., Korslund, L., Kjelland, V., Slettan, A., Stuen, S., Kjellander, P., Christensson, M., Teräväinen, M., Baum, A., Jensen, L. M. & Bødker, René, 9 nov. 2020, I: *Scientific Reports*. 10, 1, 19376.

### **Landscape and spatial patterns of avian influenza virus in Danish wild birds, 2006-2020**

Kjær, Lene Jung, Hjulsager, C., Larsen, Lars, Boklund, Anette, Halasa, T., Ward, M. & Kirkeby, Carsten, 2020, Authorea.

### **Modelling the monthly abundance of *Culicoides* biting midges in nine European countries using Random Forests machine learning**

Cuéllar, A. C., Kjær, L. J., Baum, A., Stockmarr, A., Skovgard, H., Nielsen, S. A., Andersson, M. G., Lindström, A., Chirico, J., Lühken, R., Steinke, S., Kiel, E., Gethmann, J., Conraths, F. J., Larska, M., Smreczak, M., Orłowska, A., Hamnes, I., Sviland, S., Hopp, P. & 21 flere, Brugger, K., Rubel, F., Balenghien, T., Garros, C., Rakotoarivony, I., Allène, X., Lhoir, J., Chavernac, D., Delécolle, J. C., Mathieu, B., Delécolle, D., Setier-Rio, M. L., Scheid, B., Chueca, M. Á. M., Barceló, C., Lucientes, J., Estrada, R., Mathis, A., Venail, R., Tack, W. & Bødker, René, 2020, I: *Parasites and Vectors*. 13, 1, 18 s., 194.

### **Spatial and temporal patterns of Lyme Neuroborreliosis on Funen, Denmark from 1995-2014**

Andreasen, A. M., Dehrendorff, P. B., Knudtzen, F. C., Bødker, René, Kjær, Lene Jung & Skarphedinsson, S., 2020, I: *Scientific Reports*. 10, 1, 8 s., 7796.

### **Spatial data of *Ixodes ricinus* instar abundance and nymph pathogen prevalence, Scandinavia, 2016-2017**

Kjær, Lene Jung, Klitgaard, K., Soleng, A., Skarsfjord Edgar, K., Elisabeth Lindstedt, H. H., Paulsen, K. M., Kristine andreasen, Å., Korslund, L., Kjelland, V., Slettan, A., Stuen, S., Kjellander, P., Christensson, M., Teräväinen, M., Baum, A., Mark Jensen, L. & Bødker, René, 2020, I: *Scientific Data*. 7, 7 s., 238.

### **Vector-borne zoonoses**

Bødker, René, Lohse, L. & Kjær, Lene Jung, 2020, *Annual Report on Zoonoses in Denmark 2019*. Technical University of Denmark, s. 17-19 (Annual Report on Zoonoses in Denmark).

**A large-scale screening for the taiga tick, *Ixodes persulcatus*, and the meadow tick, *Dermacentor reticulatus*, in southern Scandinavia, 2016**

Kjær, Lene Jung, Soleng, A., Edgar, K. S., Lindstedt, H. E. H., Paulsen, K. M., Andreassen, Å. K., Korslund, L., Kjelland, V., Slettan, A., Stuen, S., Kjellander, P., Christensson, M., Teräväinen, M., Baum, A., Isbrand, A., Mark Jensen, L., Klitgaard, K. & Bødker, René, 2019, I: Parasites and Vectors. 12, 1, 4 s., 338.

**Exposure of non-target small mammals to anticoagulant rodenticide during chemical rodent control operations**

Elmeros, M., Bossi, R., Christensen, T. K., Kjær, Lene Jung, Lassen, P. & Topping, C. J., 2019, I: Environmental Science and Pollution Research. 26, 6, s. 6133–6140

**Multiple infections in questing nymphs and adult female *Ixodes ricinus* ticks collected in a recreational forest in Denmark**

Klitgaard, K., Kjær, Lene Jung, Isbrand, A., Hansen, M. F. & Bødker, René, 2019, I: Ticks and Tick-borne Diseases. 10, 5, s. 1060-1065

**Predicting and mapping human risk of exposure to *Ixodes ricinus* nymphs using climatic and environmental data, Denmark, Norway and Sweden, 2016**

Kjær, Lene Jung, Soleng, A., Edgar, K. S., Lindstedt, H. E. H., Paulsen, K. M., Andreassen, Å. K., Korslund, L., Kjelland, V., Slettan, A., Stuen, S., Kjellander, P., Christensson, M., Teräväinen, M., Baum, A., Klitgaard, K. & Bødker, René, 2019, I: Eurosurveillance. 24, 9, 11 s.

**Predicting the spatial abundance of *Ixodes ricinus* ticks in southern Scandinavia using environmental and climatic data**

Kjær, Lene Jung, Soleng, A., Edgar, K. S., Lindstedt, H. E. H., Paulsen, K. M., Andreassen, Å. K., Korslund, L., Kjelland, V., Slettan, A., Stuen, S., Kjellander, P., Christensson, M., Teräväinen, M., Baum, A., Klitgaard, K. & Bødker, René, 2019, I: Scientific Reports. 9, 1, 16 s., 18144.

**Quantifying the potential for bluetongue virus transmission in Danish cattle farms**

Haider, N., Kjær, Lene Jung, Skovgård, H., Nielsen, S. A. & Bødker, René, 2019, I: Scientific Reports. 9, 1, 12 s., 13466.

**Simulation of transmission and persistence of African swine fever in wild boar in Denmark**

Halasa, T., Boklund, Anette, Bøtner, A., Mortensen, S. & Kjær, Lene Jung, 2019, I: Preventive Veterinary Medicine. 167, s. 68 - 79

**Microclimatic temperatures at Danish cattle farms, 2000–2016: quantifying the temporal and spatial variation in the transmission potential of Schmallenberg virus**

Haider, N., Cuellar, A. C., Kjær, Lene Jung, Sørensen, J. H. & Bødker, René, 2018, I: Parasites & Vectors. 11, 128.

**Migrating birds and carnivores introduce ticks and tick borne pathogens to Denmark – but are they also a public health risk?**

Bødker, René, Vrbová, E., Højgaard, J., Madsen, Jesper Johannes, Thorup, Kasper, Kjær, Lene Jung, Chriél, M., Isbrand, A. & Schou, K. K., 2018.

**Monthly variation in the probability of presence of adult *Culicoides* populations in nine European countries and the implications for targeted surveillance**

Cuellar, A. C., Jung Kjær, L., Baum, A., Stockmarr, A., Skovgard, H., Nielsen, S. A., Andersson, M. G., Lindström, A., Chirico, J., Lühken, R., Steinke, S., Kiel, E., Gethmann, J., Conraths, F. J., Larska, M., Smreczak, M., Orłowska, A., Hamnes, I., Sviland, S., Hopp, P. & 21 flere, Brugger, K., Rubel, F., Balenghien, T., Garros, C., Rakotoarivony, I., Allène, X., Lhoir, J., Chavernac, D., Delécolle, J., Mathieu, B., Delécolle, D., Setier-Rio, M., Venail, R., Scheid, B., Chueca, M. Á. M., Barceló, C., Lucientes, J., Estrada, R., Mathis, A., Tack, W. & Bødker, René, 2018, I: Parasites & Vectors. 11, 608.

**Predicting and mapping human risk of exposure to *Ixodes ricinus* nymphs in northern Europe using climatic and environmental data**

Kjær, Lene Jung, Soleng, A., Skarsfjord Edgar, K., Lindstedt, H. E. H., Mørk Paulsen, K., Andreassen, Å. K., Korslund, L., Kjelland, V., Slettan, A., Stuen, S., Kjellander, P., Christensson, M., Teräväinen, M., Baum, A., Schou, K. K. & Bødker, René, 2018.

**Spatial and temporal variation in the abundance of Culicoides biting midges (Diptera: Ceratopogonidae) in nine European countries**

Cuellar, A. C., Kjær, L. J., Kirkeby, C. T., Skovgaard, H., Nielsen, S. A., Stockmarr, A., Andersson, G., Lindstrom, A., Chirico, J., Lühken, R., Steinke, S., Kiel, E., Gethmann, J., Conraths, F. J., Larska, M., Hamnes, I., Sviland, S., Hopp, P., Brugger, K., Rubel, F. & 19 flere, Balenghien, T., Garros, C., Rakotoarivony, I., Allène, X., Lhoir, J., Chavernac, D., Delécolle, J., Mathieu, B., Delécolle, D., Setier-Rio, M., Venail, R., Scheid, B., Chueca, M. Á. M., Barceló, C., Lucientes, J., Estrada, R., Mathis, A., Tack, W. & Bødker, René, 2018, I: Parasites & Vectors. 11

**Tag ikke engflåter med hjem fra ferien**

Bødker, René, Petersen, R. E., Kjær, Lene Jung, Isbrand, A. & Schou, K. K., 2018, I: Dansk Veterinaertidsskrift. 8, s. 42-42 1 s.

**The annual, temporal and spatial pattern of Setaria tundra outbreaks in Finnish reindeer: a mechanistic transmission model approach**

Haider, N., Laaksonen, S., Kjær, Lene Jung, Oksanen, A. & Bødker, René, 2018, I: Parasites & Vectors. 11, 565.

**Vectorborne zoonoses**

Bødker, René, Kjær, Lene Jung, Hansen, M. F., Petersen, A., Lohse, L. & Schou, K. K., 2018, *Annual Report on Zoonoses in Denmark 2017*. National Food Institute, Technical University of Denmark, s. 24-25 2 s.

**Big data - modelling of midges in Europa using machine learning techniques and satellite imagery**

Cuellar, A. C., Kjær, L. J., Skovgaard, H., Nielsen, S. A., Stockmarr, A., Anderson, G., Lindström, A., Chirico, J., Lilja, T., Lühken, R., Steinke, S., Kiel, E., Larska, M., Hamnes, S. I., Sviland, S., Hopp, P., Brugger, K., Rubel, F., Balenghien, T., Garros, C. & 16 flere, Rakotoarivony, I., Allene, X., Lhoir, J., Delecolle, J. C., Mathieu, B., Delecolle, D., Setier-Rio, M. L., Venail, R., Scheid, B., Miranda Chueca, M. A., Barcelo Segui, C., Lucientes, J., Estrada, R., Wesley, T., Mathis, A. & Bødker, René, 2017, *NKVet Symposium 2017 - abstract book*.

**Microclimatic temperatures increase the potential for vector-borne disease transmission in the Scandinavian climate**

Haider, N., Kirkeby, Carsten, Kristensen, B., Kjær, Lene Jung, Havskov Sørensen, J. & Bødker, René, 2017, I: Scientific Reports. 7, 8175.

**Microclimatic temperatures of Danish cattle farms: a better understanding of the variation in transmission potential of Schmallenberg virus**

Haider, N., Cuellar, A. C., Kjær, Lene Jung, Havskov Sørensen, J. & Bødker, René, 2017, s. 54-55.

**Modelling risk of tick exposure in southern Scandinavia using machine learning techniques, satellite imagery, and human population density maps**

Kjær, Lene Jung, Korslund, L., Kjelland, V., Slettan, A., Andreassen, Å. K., Paulsen, K. M., Christensson, M., Kjellander, P., Teräväinen, M., Soleng, A., Edgar, K. S., Lindstedt, H. H., Schou, K. K. & Bødker, René, 2017.

**Modelling tick abundance using machine learning techniques and satellite imagery**

Kjær, Lene Jung, Korslund, L., Kjelland, V., Slettan, A., Andreassen, Å. K., Paulsen, K. M., Christensson, M., Kjellander, P., Teräväinen, M., Soleng, A., Edgar, K. S., Lindstedt, H. H., Schou, K. K. & Bødker, René, 2017.

**Predicting tick abundance in Southern Scandinavia using machine learning techniques and satellite imagery – a part of the ScandTick Innovation project**

Kjær, Lene Jung, Korslund, L., Kjelland, V., Slettan, A., Andreassen, Å. K., Paulsen, K. M., Christensson, M., Kjellander, P., Teräväinen, M., Soleng, A., Edgar, K. S., Lindstedt, H. H., Schou, K. K. & Bødker, René, 2017.

**Social affiliation and contact patterns among white-tailed deer in disparate landscapes: Implications for disease transmission**

Schauber, E. M., Nielsen, C. K., Kjær, Lene Jung, Anderson, C. W. & Storm, D. J., 1 feb. 2015, I: Journal of Mammalogy. 96, 1, s. 16-28 13 s.

**Recovery based on plot experiments is a poor predictor of landscape-level population impacts of agricultural pesticides**  
Topping, C. J., Kjær, Lene Jung, Hommen, U., Høye, T. T., Preuss, T. G., Sibly, R. M. & Van Vliet, P., 2014, I: Environmental Toxicology and Chemistry. 33, 7, s. 1499-1507 9 s.

**Spatial and temporal analysis of contact rates in female white-tailed deer**

Kjær, Lene Jung, Schaubert, E. M. & Nielsen, C. K., 1 nov. 2008, I: Journal of Wildlife Management. 72, 8, s. 1819-1825 7 s.

## Aktiviteter

**Temporal dynamics of tick abundance in Denmark, 2017-2024**

Kjær, Lene Jung (Andet)  
18 apr. 2024

**SVEPM Conference, 20-22 March 2024 Uppsala, Sweden**

Kjær, Lene Jung (Deltager)  
20 mar. 2024 → 22 mar. 2024

**Surveillance data and early warning models of highly pathogenic avian influenza in East Asia, 2020-2022**

Kjær, Lene Jung (Andet)  
21 sep. 2023

**Exploring the role of wild birds in transmitting avian influenza virus in Denmark using a spatiotemporal epidemic model**

Liu, Yangfan (Oplægsholder), Kjær, Lene Jung (Andet), Boklund, Anette (Andet), Kirkeby, Carsten (Andet), Clausen, P. (Andet) & Nygaard, T. (Andet)  
23 mar. 2023

**Potential drivers of human tick-borne encephalitis in the Örebro region of Sweden, 210-2021**

Kjær, Lene Jung (Andet)  
8 feb. 2023

**SVEPM 2022**

Kjær, Lene Jung (Deltager)  
23 mar. 2022 → 25 mar. 2022

**Spatial patterns of avian influenza in wild birds from Denmark, 2006-2020**

Kjær, Lene Jung (Andet), Hjulsager, C. (Andet), Larsen, Lars (Andet), Boklund, Anette (Andet), Halasa, T. (Andet), Ward, M. P. (Andet) & Kirkeby, Carsten (Andet)  
25 mar. 2021

**Risikofaktorer for aviær influenza i Danmark - resultatet af ROFUS projektet**

Kjær, Lene Jung (Andet), Kirkeby, Carsten (Andet), Boklund, Anette (Andet), Larsen, Lars (Andet), Hjulsager, C. K. (Andet), Halasa, T. (Andet) & Ward, M. P. (Andet)  
17 mar. 2021