

DNA requirements for WGS with Illumina MiSeq

1. DNA must be RNAse treated as it has negative effect on the quality and the yield of sequencing libraries.
2. Elute your DNA in the elution buffer or nuclease-free water provided in the kit.
3. Your DNA must fit these requirements:

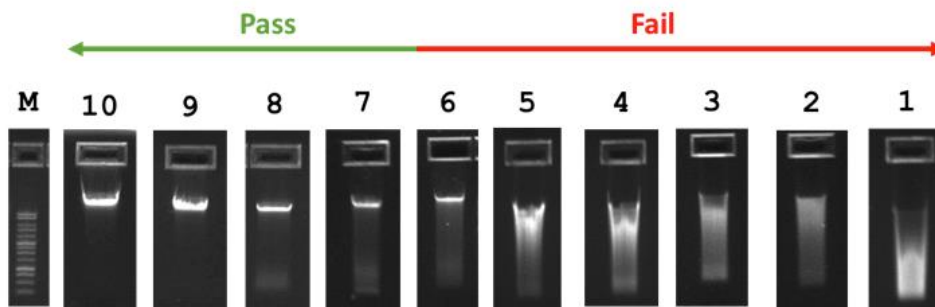
NanoDrop:

Quality - A260:280 values should be 1.8 or greater

Concentration – we require min. 30 ng/μl of DNA as measured with Qubit (be aware that nanodrop may give false higher concentrations due to measurement of other compounds in the sample, so we recommend aiming for min. 50ng/μl if measured with nanodrop)

Gel electrophoresis:

gDNA should have a high molecular weight band (>12kb) with little/no evidence of degradation (smearing) and minimal RNA contamination.



It is your responsibility if you submit low quality DNA and sequencing fails!